

NOTES:-
 THESE DRAWINGS HAVE BEEN PREPARED IN ACCORDANCE WITH WCJ DRAWINGS:-
 6918/01 P1
 6918/02 P1
 6918/03 P1
 6918/04 P2
 6918/05 -
 6918/06 B
 6918/07 A
 6918/08 -

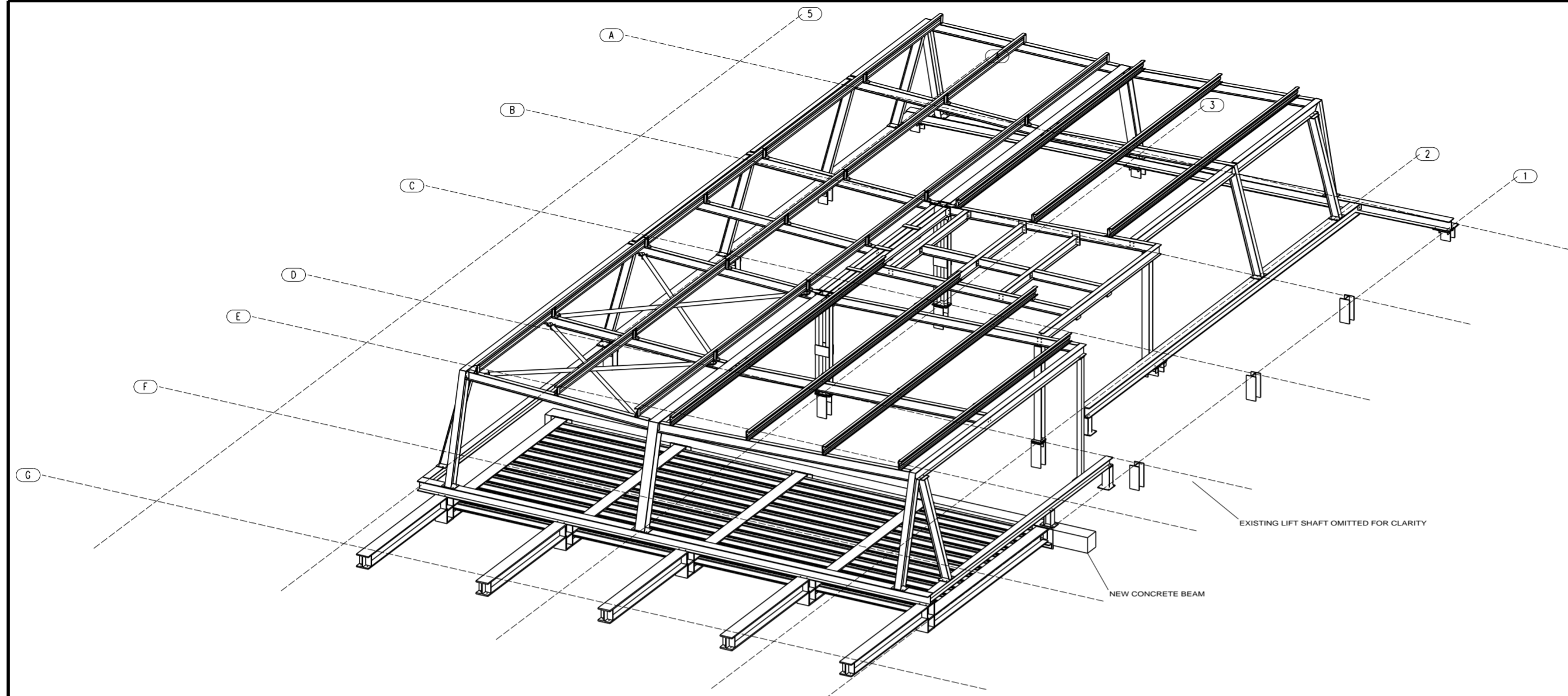
WELDING ENGINEERS SURVEY MAY-05

ALL STEELWORK TO BE GRADE S275
 ALL BOLTS TO BE GRADE 8.8

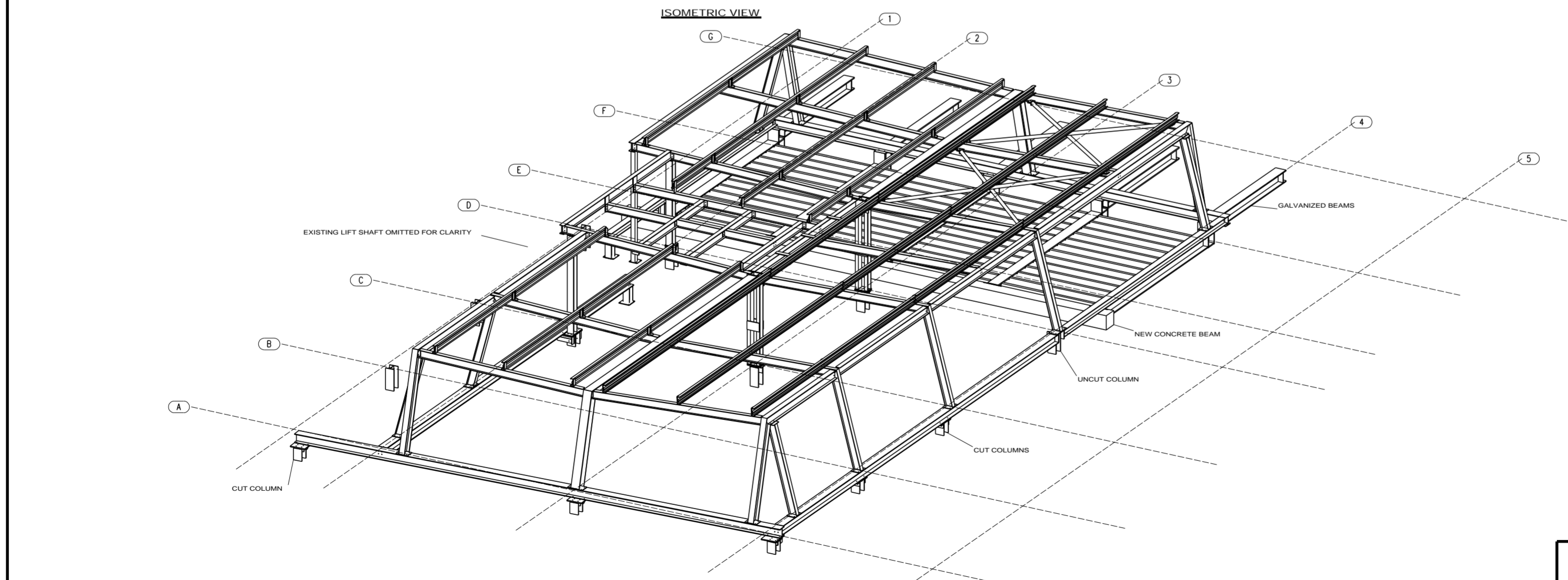
INTERNAL STEELWORK SHALL HAVE THE FOLLOWING FINISH:-
 [1] BLAST CLEAN TO SA 2.5 [BS 7079 PART A]
 [2] PAINT TREATMENT -
 MATERIAL: LEIGHS EPIGRIP C400 V2 EPOXY
 ZINC PHOSPHATE - THICKNESS 75 MICRONS
 TOUCHED UPS ON SITE TO PAINT SUPPLIERS SPECIFICATION
 FIRE PROTECTION BY OTHERS

EXTERNAL STEELWORK
 GALVANISED TO BS 729

STEELWORK TO BE POSITIONED ON SITE TO SET GRIDS BY SURVEY TEAM
 GRIDS POSITIONED AT INTERSECTION D/3 AS ORIGIN
 100.000mE 500.000mN

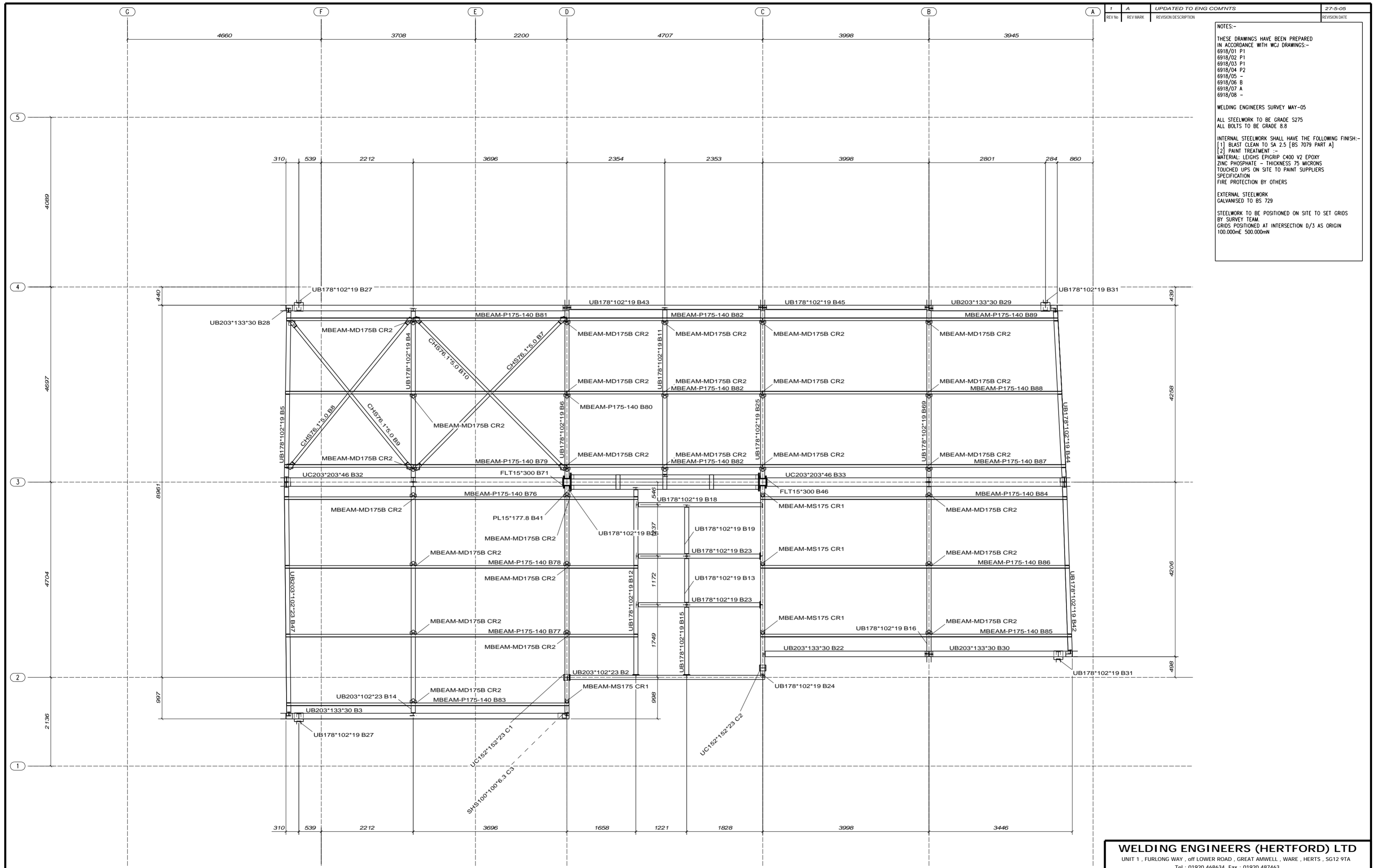


ISOMETRIC VIEW



ISOMETRIC VIEW

WELDING ENGINEERS (HERTFORD) LTD			
UNIT 1, FURLONG WAY, off LOWER ROAD, GREAT AMWELL, WARE, HERTS., SG12 9TA			
Tel : 01920 468634 Fax : 01920 487463			
DRAWING TITLE	ISOMETRIC DETAIL - ROOF STEELWORK		
CONTRACT	Livery House - Pratt St		
MODELLED BY	L.B.F.	ISSUE DATE	23-5-5
CONTRACT NO	1100	SCALE	1/50
DRAWING No	1100-001-001	REVISION No.	A



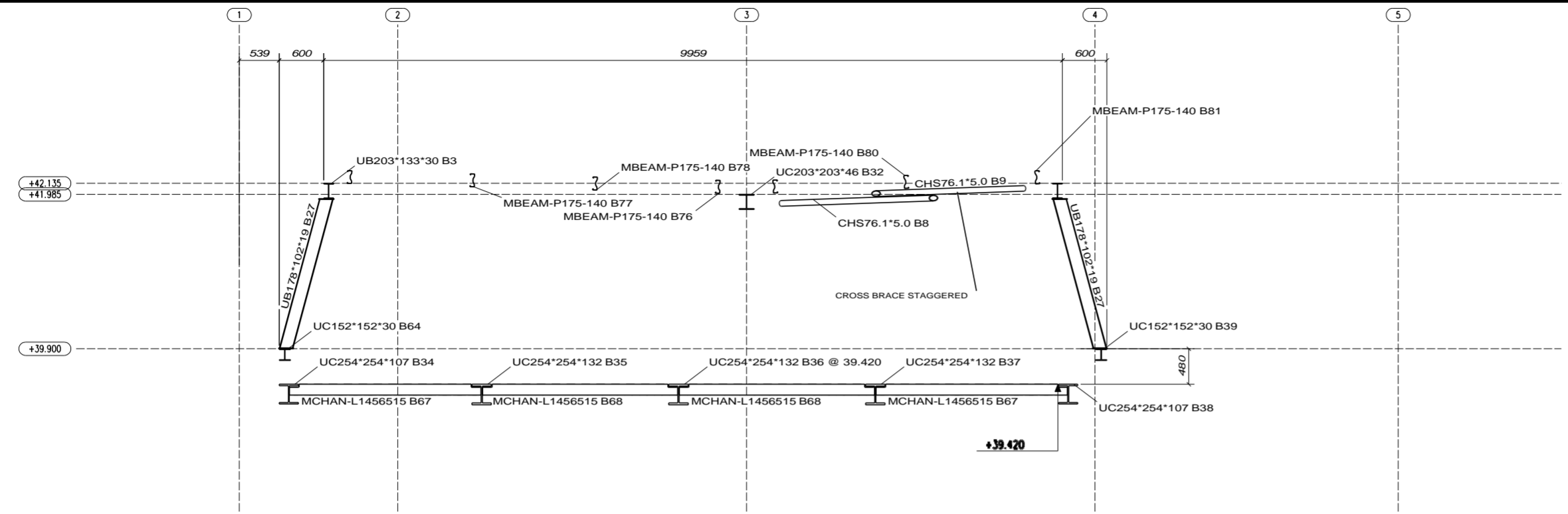
NOTES:-
 THESE DRAWINGS HAVE BEEN PREPARED IN ACCORDANCE WITH WCJ DRAWINGS:-
 6918/01 P1
 6918/02 P1
 6918/03 P1
 6918/04 P2
 6918/05 -
 6918/06 B
 6918/07 A
 6918/08 -
 WELDING ENGINEERS SURVEY MAY-05
 ALL STEELWORK TO BE GRADE S275
 ALL BOLTS TO BE GRADE 8.8
 INTERNAL STEELWORK SHALL HAVE THE FOLLOWING FINISH:-
 (1) BLAST CLEAN TO SA 2.5 [BS 7079 PART A]
 (2) PAINT TREATMENT - C400 V2 EPOXY ZINC PHOSPHATE - THICKNESS 75 MICRONS TOUCHED UPS ON SITE TO PAINT SUPPLIERS SPECIFICATION
 FIRE PROTECTION BY OTHERS
 EXTERNAL STEELWORK GALVANISED TO BS 729
 STEELWORK TO BE POSITIONED ON SITE TO SET GRIDS BY SURVEY TEAM
 GRIDS POSITIONED AT INTERSECTION D/3 AS ORIGIN 100.000mE 500.000mN

1	A	UPDATED TO ENG COMNTS	27-5-05
REV No	REV MARK	REVISION DESCRIPTION	REVISION DATE

PLAN +42.135

WELDING ENGINEERS (HERTFORD) LTD			
UNIT 1, FURLONG WAY, off LOWER ROAD, GREAT AMWELL, WARE, HERTS, SG12 9TA			
Tel : 01920 468634 Fax : 01920 487463			
DRAWING TITLE	ROOF STEELWORK - PLAN AT 41.135		
CONTRACT	Livery House - Pratt St		
MODELLED BY	L.B.F.	ISSUE DATE	23-5-05
CONTRACT NO	1100	SCALE	1/40
DRAWING No	1100-001-003	REVISION No.	A

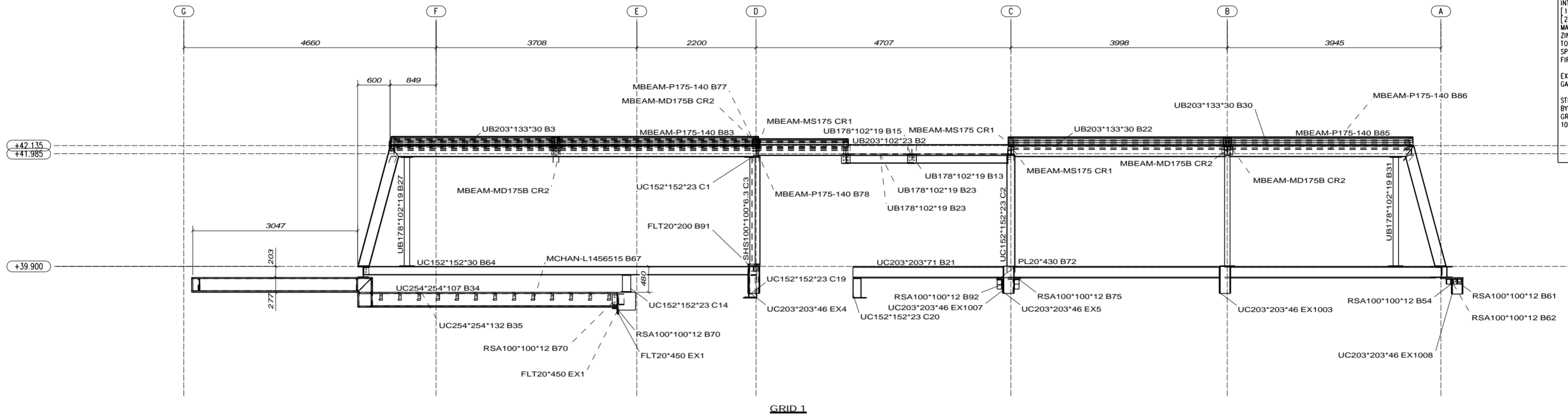
NOTES:-
 THESE DRAWINGS HAVE BEEN PREPARED IN ACCORDANCE WITH WCJ DRAWINGS:-
 6918/01 P1
 6918/02 P1
 6918/03 P1
 6918/04 P2
 6918/05 -
 6918/06 B
 6918/07 A
 6918/08 -
 WELDING ENGINEERS SURVEY MAY-05
 ALL STEELWORK TO BE GRADE S275
 ALL BOLTS TO BE GRADE 8.8
 INTERNAL STEELWORK SHALL HAVE THE FOLLOWING FINISH:-
 (1) BLAST CLEAN TO SA 2.5 (BS 7079 PART A)
 (2) PAINT TREATMENT :-
 MATERIAL: LEIGHS EPIGRIP C400 V2 EPOXY
 ZINC PHOSPHATE - THICKNESS 75 MICRONS
 TOUCHED UPS ON SITE TO PAINT SUPPLIERS SPECIFICATION
 FIRE PROTECTION BY OTHERS
 EXTERNAL STEELWORK
 GALVANISED TO BS 729
 STEELWORK TO BE POSITIONED ON SITE TO SET GRIDS BY SURVEY TEAM.
 GRIDS POSITIONED AT INTERSECTION D/J AS ORIGIN
 100.000mE 500.000mN



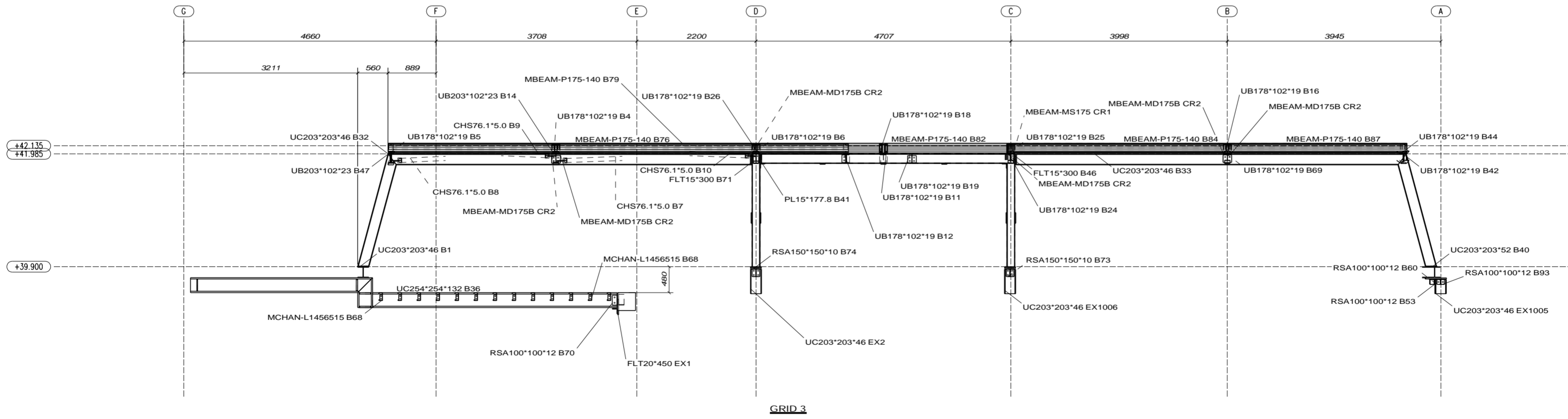
NOTES:-
 THESE DRAWINGS HAVE BEEN PREPARED IN ACCORDANCE WITH WCI DRAWINGS:-
 6918/01 P1
 6918/02 P1
 6918/03 P1
 6918/04 P2
 6918/05 -
 6918/06 B
 6918/07 A
 6918/08 -

WELDING ENGINEERS SURVEY MAY-05
 ALL STEELWORK TO BE GRADE S275
 ALL BOLTS TO BE GRADE 8.8
 INTERNAL STEELWORK SHALL HAVE THE FOLLOWING FINISH:-
 [1] BLAST TREATMENT TO SA 2.5 [BS 7079 PART A]
 [2] PAINT TREATMENT :-
 MATERIAL: LEIGHS EPIGRIP C400 V2 EPOXY
 ZINC PHOSPHATE - THICKNESS 75 MICRONS
 TOUCHED UPS ON SITE TO PAINT SUPPLIERS SPECIFICATION
 FIRE PROTECTION BY OTHERS
 EXTERNAL STEELWORK
 GALVANISED TO BS 729

STEELWORK TO BE POSITIONED ON SITE TO SET GRIDS BY SURVEY TEAM.
 GRIDS POSITIONED AT INTERSECTION D/3 AS ORIGIN
 100.000mE 500.000mN



GRID 1



GRID 3

WELDING ENGINEERS (HERTFORD) LTD
 UNIT 1, FURLONG WAY, off LOWER ROAD, GREAT AMWELL, WARE, HERTS, SG12 9TA
 Tel : 01920 468634 Fax : 01920 487463

DRAWING TITLE	ROOF STEELWORK - GRID 1 & 3 SECTIONS		
CONTRACT	Livery House - Pratt St		
MODELLED BY	L.B.F.	ISSUE DATE	23-5-5
CONTRACT NO	1100	SCALE	1/40
DRAWING No	1100-001-005	REVISION No.	A